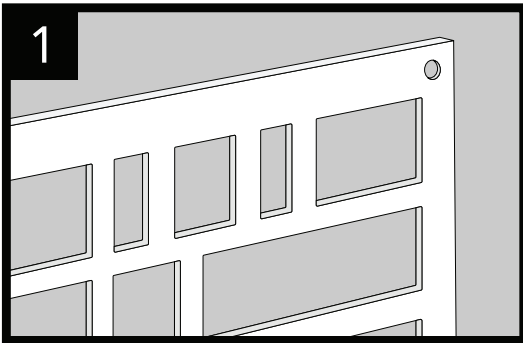


DECORATIVE PANELS 2' x 4'

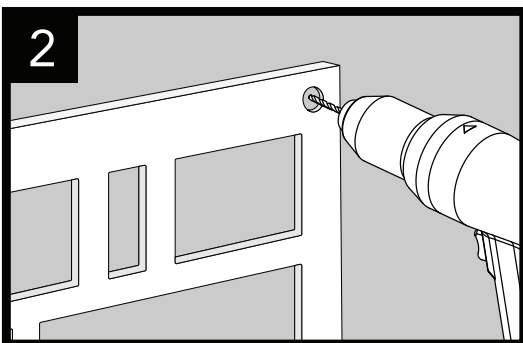
Includes six (6) color-matched screw caps. Screws NOT included.

INSTALL INSTRUCTIONS

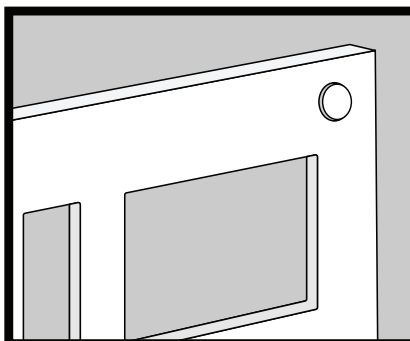
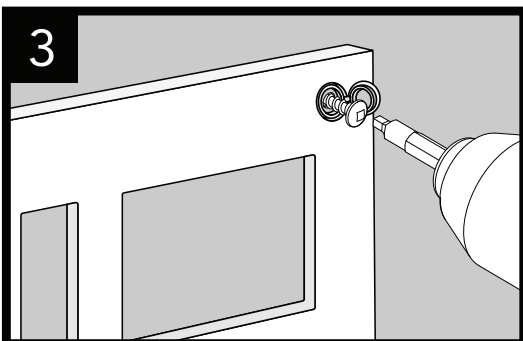
- Easy to install
- Each panel will require (4) #8 1 ½" long stainless steel screws and screw covers.
- Allow 1/16" between sheets for expansion and contraction
- All four corners of the panel must be fastened to the mounting surface.
- Product expands and contracts with temperature
- Mount loosely. Do not nail
- Easy to cut using a fine tooth saw
- Made from low-maintenance, durable, high-quality polypropylene plastic.
- Fully paintable - check with your local paint store for instructions.
- C & H channels are available in matching colors. Sold Separately.



1
Indentation identifies the recommended fastener location.



2
Pre-drill using a 1/8" bit.



3
Place the screw into the hole of the cap, fasten, then cap.